

***PETPACK***

*Tecnología en envases y preformas*

[www.petpack.com.co](http://www.petpack.com.co)

**CATALOG PRODUCT PORTFOLIO**

# OUR MISSION

We build complete packaging solutions, from a wide portfolio of products or from the generation of innovative and sustainable proposals, accompanying their development until delivering a functional and reliable product according to the client's needs.



## RESEARCH AND DEVELOPMENT

- Design and CAD 3D.
- 3D Printing Models.
- Test Molds.
- Exclusive Designs.
- Visual Merchandising Advice.
- Advice on Packaging.

## TECHNOLOGY AND PRODUCTION

- Flexibility on Minimum Order Quantities.
- Technical Guide.
- Support in Production Processes.
- Production Standards for the Food Industry.
- 100% Production Batch Traceability.
- Technology for the Production of Hot Fill Bottles.

## PRODUCTS AND PROCESSES

- Injection of Preforms and Caps/Closures.
- ISO 9001 Certification.
- Wide range of Products Portfolio from Finish Size 28mm up to 120mm.
- Analysis and Physical Laboratory Tests.



# CONTENT

FINISH  
SIZE

**28**

FINISH  
SIZE

**38**

**06**

HOT FILL **38**

FINISH  
SIZE

**63**

**01**

FINISH  
SIZE

**48**

**08**

**10**

**11**

FINISH  
SIZE

**80**

FINISH  
SIZE

**90**

FINISH  
SIZE

**120**

CAPS  
CLOSURES

**38 63 80**  
**90 120**

**15**

**17**

**24**

**09**

**14**

**16**

**23**

**28**

# FINISH SIZE 28

01

28-01



**60 mL BOTTLE**  
Dmax: 45 mm  
Height: 99.7 mm

28-02



**120 mL BOTTLE**  
Dmax: 48.7 mm  
Height: 104.1 mm

28-03



**250 mL GLUE BOTTLE**  
Dmax: 63 mm  
Height: 130.7 mm

28-04



**375 mL GLUE BOTTLE**  
Dmax: 65.5 mm  
Height: 150 mm

28-05



**750 mL GLUE BOTTLE**  
Dmax: 84.2 mm  
Height: 192 mm

28-06



**1030 mL GLUE BOTTLE**  
Dmax: 90 mm  
Height: 210 mm

# FINISH SIZE 28

28-07



**270 mL COLMANS BOTTLE**  
Dmax: 90 mm  
Height: 179.2 mm

28-08



**153 mL CHIMICHURRI BOTTLE**  
Dmax: 42 mm  
Height: 164.55 mm

28-09



**160 mL CHIMICHURRI BOTTLE**  
Dmax: 42 mm  
Height: 168.1 mm

28-10



**180 mL CHIMICHURRI BOTTLE**  
Dmax: 42 mm  
Height: 179.41 mm

# FINISH SIZE 28

03

28-11



**250 mL CARNIVAL BOTTLE**  
Dmax: 50 mm  
Height: 187.2 mm

28-12



**400 mL CARNIVAL BOTTLE**  
Dmax: 60 mm  
Height: 213 mm

28-13



**600 mL CARNIVAL BOTTLE**  
Dmax: 68 mm  
Height: 239 mm

28-14



**1800 mL CARNIVAL BOTTLE**  
Dmax: 96.6 mm  
Height: 363 mm

28-15



**3050 mL CARNIVAL BOTTLE**  
Dmax: 121 mm  
Height: 374 mm

# FINISH SIZE 28

28-16



**400 mL VINAIGRETTE BOTTLE**  
Dmax: 78.5 mm  
Height: 163 mm

28-17



**500 mL BELL BOTTLE**  
Dmax: 83.5 mm  
Height: 142 mm

28-18



**500 mL VINAIGRETTE BOTTLE**  
Dmax: 64.4 mm  
Height: 216.59 mm

28-19



**400 mL BULLET BOTTLE**  
Dmax: 60.66 mm  
Height: 173.64 mm

28-20



**500 mL BULLET BOTTLE**  
Dmax: 61 mm  
Height: 206 mm

28-21



**1000 mL BULLET BOTTLE**  
Dmax: 80.6 mm  
Height: 251.5 mm

# FINISH SIZE 28

28-22



**350 mL PETALOID BOTTLE**  
Dmax: 61.2 mm  
Height: 172.44 mm

28-23



**400 mL PETALOID BOTTLE**  
Dmax: 59.89 mm  
Height: 205.54 mm

28-24



**500 mL WATER BOTTLE**  
Dmax: 62 mm  
Height: 209 mm

28-25



**1000 mL JUICE BOTTLE**  
Dmax: 82.89 mm  
Height: 238.52 mm

28-26



**765 mL WINE BOTTLE**  
Dmax: 71.5 mm  
Height: 284.2 mm



# FINISH SIZE 38

38-01



**100 mL SEASONING JAR**  
Dmax: 45 mm  
Height: 105 mm

38-02



**110 mL KITANO JAR**  
Dmax: 46 mm  
Height: 109.5 mm

38-03



**250 mL SQUARE JAR**  
Dmax: 73.8 mm  
Height: 117.8 mm

38-04



**265 mL JAR**  
Dmax: 51 mm  
Height: 150 mm

38-05



**300 mL EXPORTATION JAR**  
Dmax: 54 mm  
Height: 176 mm

# FINISH SIZE 38

07

38-06



**340 mL CURVED BOTTLE**  
Dmax: 73 mm  
Height: 160 mm

38-07



**370 mL SAUCE BOTTLE**  
Dmax: 76 mm  
Height: 150.6 mm

38-08



**370 mL CAMPERO BOTTLE**  
Dmax: 84 mm  
Height: 199 mm

38-09



**1000 mL YOGURT BOTTLE**  
Dmax: 84.2 mm  
Height: 250 mm

# FINISH SIZE 38

08



38-10

**2L GARRAFA BOTTLE**  
Dmax: 127.76 mm  
Height: 260.52 mm



38-11

**3000 mL BOTTLE WITH STRUCTURE**  
Dmax: 138 mm  
Height: 280 mm



48-01

FINISH  
SIZE **48**

**5L BOTTLE**  
Dmax: 152 mm  
Height: 312 mm

# CLOSURES / CAPS 38

COLORES	Pantone 661 C	Pantone 7548 C	Pantone 7728 C	White
	Pantone 1665 C	Pantone 1795 C	Pantone 375 C	Pantone Neutral Black

T01



**38mm DISPENSER CAP**  
Finish Size 38 mm  
1.5 mm Perforations

T02



**38mm DISPENSER CAP**  
Finish Size 38 mm  
3 mm Perforations

T03



**38mm DISPENSER CAP**  
Finish Size 38 mm  
8 mm Perforations

T04



**38mm FLIP TOP CAP**  
Finish Size 38 mm

# HOT FILL 38

HF-01



**250 mL HOT FILL  
ROUND BOTTLE**  
Dmax: 56 mm  
Height: 145 mm

HF-02



**250 mL HOT FILL BOTTLE**  
Dmax: 54 mm  
Height: 168 mm

HF-03



**300 mL HOT FILL BOTTLE**  
Dmax: 56.3 mm  
Height: 178.2 mm

HF-04



**400 mL HOT FILL BOTTLE**  
Dmax: 63.5 mm  
Height: 190 mm

HF-05



**500 mL HOT FILL  
SQUARE BOTTLE**  
Dmax: 60 mm  
Height: 190 mm

HF-06



**500 mL HOT FILL BOTTLE**  
Dmax: 65.7 mm  
Height: 206 mm

# FINISH SIZE 63

**63-01**



**150 mL OVAL JAR**  
Dmax: 67 mm  
Height: 72.88 mm

**63-02**



**210 mL JAR**  
Dmax: 67 mm  
Height: 75.53 mm

**63-03**



**230 mL JAR**  
Dmax: 71.94 mm  
Height: 80.57 mm

**63-04**



**250 mL JAR**  
Dmax: 75.5 mm  
Height: 90 mm

**63-05**



**HALF KILOGRAM JAR**  
Dmax: 79.5 mm  
Height: 135.1 mm

**63-06**



**516 mL JAR**  
Dmax: 71.8 mm  
Height: 175.4 mm

# FINISH SIZE 63

**63-07**



**KILOGRAM JAR**  
Dmax: 93 mm  
Height: 172.5 mm

**63-08**



**530 mL TREE JAR**  
Dmax: 102.5 mm  
Height: 174 mm

**63-09**



**550 mL STAR JAR**  
Dmax: 131 mm  
Height: 152 mm

**63-10**



**700 mL HEART JAR**  
Dmax: 153.5 mm  
Height: 155 mm

# FINISH SIZE 63

63-11



**620 mL INCLINED JAR**

Dmax: 110 mm  
Height: 116.5 mm

63-12



**662 mL JAR**

Dmax: 76.9 mm  
Height: 191.59 mm

63-13



**1000 mL SEASONING JAR**

Dmax: 92 mm  
Height: 205 mm



# CLOSURES / CAPS 63

COLORES	Pantone 661 C	Pantone 7548 C	Pantone 7728 C	White
	Pantone 1665 C	Pantone 1795 C	Pantone 375 C	Pantone Neutral Black

T05



63mm INCLINED CAP  
Finish Size 63 mm  
Customizable with insert

T06



63mm DISPENSER CAP HALF  
MOON WITH PERFORATIONS  
Finish Size 63 mm  
5 mm Perforations

T07



63mm DISPENSER CAP HALF  
MOON WITH TRIANGLE  
Finish Size 63 mm

# FINISH SIZE 80

15

80-01



**350 mL ROUND JAR**

Dmax: 92.5 mm  
Height: 70 mm

80-02



**500 mL ROUND JAR**

Dmax: 92.4 mm  
Height: 95 mm

# CLOSURES / CAPS 80

COLORES	Pantone 661 C	Pantone 7548 C	Pantone 7728 C	White
	Pantone 1665 C	Pantone 1795 C	Pantone 375 C	Pantone Neutral Black

T08



**80mm SMOOTH CAP**  
Finish Size 80 mm

# FINISH SIZE 90

90-01



**840 mL ROUND JAR**  
Dmax: 106.2 mm  
Height: 124 mm

90-02



**1000 mL CYLINDER JAR**  
Dmax: 102 mm  
Height: 145.5 mm

90-03



**1100 mL CYLINDER JAR**  
Dmax: 102 mm  
Height: 170.3 mm

90-04



**1500 mL CYLINDER JAR**  
Dmax: 101.5 mm  
Height: 199 mm

90-05



**2L CYLINDER JAR**  
Dmax: 101 mm  
Height: 280 mm

# FINISH SIZE 90

90-06



**840 mL HOME LINE JAR**  
Dmax: 96.5 mm  
Height: 136.7 mm

90-07



**1.3L HOME LINE JAR**  
Dmax: 108 mm  
Height: 167.5 mm

90-08



**2L HEXAGONAL JAR**  
Dmax: 141 mm  
Height: 201 mm

90-09



**2L SQUARE JAR**  
Dmax: 134 mm  
Height: 151 mm

# FINISH SIZE 90

90-10



**3960 mL GALLON JAR**  
Dmax: 151.5 mm  
Height: 265 mm

90-11



**4L STRUCTURE GALLON JAR**  
Dmax: 162 mm  
Height: 255 mm

90-12



**4050 mL GALLON JAR**  
Dmax: 155.58 mm  
Height: 265.4 mm

# FINISH SIZE 90

90-13



**870 mL INCLINED JAR**  
Dmax: 124 mm  
Height: 133 mm

90-14



**1000 mL PUMPKIN JAR**  
Dmax: 128 mm  
Height: 117 mm

90-15



**1000 mL BALL JAR**  
Dmax: 127.5 mm  
Height: 127 mm

90-16



**1160 mL SANTA CLAUS JAR**  
Dmax: 117 mm  
Height: 185.5 mm

# FINISH SIZE 90

90-17



**1350 mL FLOWER JAR**  
Dmax: 186 mm  
Height: 215 mm

90-18



**1350mL DUCK JAR**  
Dmax: 124.5 mm  
Height: 182.5 mm

90-19



**1360 mL MULTILABEL JAR**  
Dmax: 128 mm  
Height: 180 mm

90-20



**1370 mL MONEY BOX PIG**  
Dmax: 127 mm  
Height: 169 mm



# FINISH SIZE 90

**90-21**



**1400 mL BEAR JAR**  
Dmax: 120.4 mm  
Height: 181.5 mm

**90-22**



**1400 mL DOG JAR**  
Dmax: 143 mm  
Height: 180 mm

**90-23**



**1640mL PIG JAR**  
Dmax: 121.5 mm  
Height: 195.5 mm

# CLOSURES / CAPS 90

COLORES	Pantone 661 C	Pantone 7548 C	Pantone 7728 C	White
	Pantone 1665 C	Pantone 1795 C	Pantone 375 C	Pantone Neutral Black

T09



90mm CAP WITH BAND  
Finish Size 90 mm

T10



90mm CAP WITHOUT BAND  
Finish Size 90 mm

# FINISH SIZE 120

120-01



**2L ROUND JAR**  
Dmax: 135.5 mm  
Height: 170.5 mm

120-02



**3L ROUND JAR**  
Dmax: 153.5 mm  
Height: 199 mm

120-03



**3.5L ROUND JAR**  
Dmax: 162.6 mm  
Height: 197 mm

120-04



**4.5L ROUND JAR**  
Dmax: 171 mm  
Height: 231 mm

# FINISH SIZE 120

25

120-05



**2.3L ROUND JAR**  
Dmax: 167.6 mm  
Height: 145.3 mm

120-06



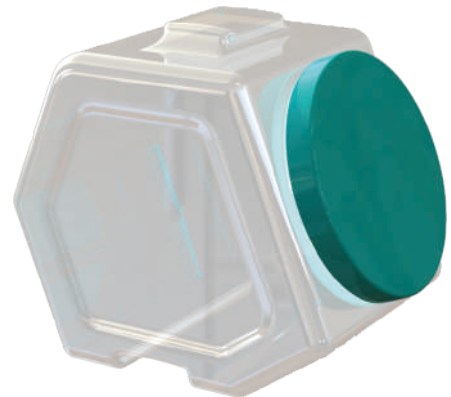
**2.5L INCLINED JAR**  
Dmax: 169 mm  
Height: 180.5 mm

120-07



**2.5L TRIANGULAR JAR**  
Dmax: 202 mm  
Height: 184 mm

120-08



**3L STACKABLE JAR**  
Dmax: 182 mm  
Height: 171.84 mm

# FINISH SIZE 120

**120-09**



**2L HOME LINE JAR**

Dmax: 123 mm  
Height: 182 mm

**120-10**



**4L HOME LINE JAR**

Dmax: 141 mm  
Height: 248 mm

**120-11**



**2L OCTOGONAL JAR**

Dmax: 138 mm  
Height: 152 mm

**120-12**



**4L OCTOGONAL JAR**

Dmax: 164 mm  
Height: 205 mm

# FINISH SIZE 120

120-13



**2.2L SQUARE JAR**  
Dmax: 136 mm  
Height: 155 mm

120-14



**3L SQUARE JAR**  
Dmax: 152.8 mm  
Height: 164.5 mm

120-15



**4.5L SQUARE JAR**  
Dmax: 151 mm  
Height: 243.5 mm

120-16



**5.7L SQUARE JAR**  
Dmax: 152.2 mm  
Height: 273 mm

# FINISH SIZE 120

28

120-17



**3124 mL JAR**  
Dmax: 149 mm  
Altura: 230 mm

# CLOSURES / CAPS 120

COLORES	Pantone 661 C	Pantone 7548 C	Pantone 7728 C	White
	Pantone 1665 C	Pantone 1795 C	Pantone 375 C	Pantone Neutral Black

T11



120mm SMOOTH CAP  
Finish Size 120 mm

T12



120mm HANDLE CAP  
Finish Size 120 mm

T13



120mm MUSHROOM CAP  
Finish Size 120 mm



# COMMITTED TO MEETING



# YOUR NEEDS AND EXPECTATIONS



**PETPACK**

*Tecnología en envases y preformas*

[www.petpack.com.co](http://www.petpack.com.co)

**(574) 444 61 08**

✉ [servicioalcliente@petpack.com.co](mailto:servicioalcliente@petpack.com.co)